

## Electric cabin elevator WESR





## Western Elevators Sdn Bhd market leader in screw with lifting ring elevators

In 2008 Western Elevators group was the first in the Malaysia to gain approval from the Malaysian Government to introduce open concept screw with lifting ring pitless elevators. Since that time Western Elevators Sdn Bhd has installed hundreds of units in Malaysia, Singapore, Brunei and Indonesia. In 2012 Western Elevators Sdn Bhd is setting the standard for the elevator market once again. Using its experience and knowledge, Western Elevators Sdn Bhd is proud to introduce the new cabin pitless elevators

WESR Model: a cabin pitless elevator that fulfils both the aesthetic and technical requirements of the most demanding customer.

Now, with the introduction of the WESR, Western Elevators Sdn Bhd is once again setting the trend **with** the advantages of a conventional passenger **elevator** automatic sliding door.





# WESR, a new perspective on elevators

The WESR model has been designed for customers who want the comfort and elevator sensation of a conventional passenger elevator but also the architectural advantages of a pitless, motor roomless and low headroom elevators.

The WESR model does not require a elevator, while headroom of 2700 mm on the upper storey is enough to enable installation of the elevator without roof penetration. Just as with conventional passenger elevator, operation is automatic and the elevator cabin is fully closed by means of telescopic doors. This means that the wall of the shaft no longer “glides past” the user at the open side of the cabin.

The drive system and the controller are integrated in the design of the elevator. This means that a separate machine room or cabinet is not required.

## No elevator pit, no roof penetration but with automatic controls and fully enclosed cabin.





# Advantages

## SAVE ON BUILDING COSTS

no pit

no extended shaft top

no machine room

## ULTIMATE COMFORT AND SAFETY

automatic control

**fully enclosed cabin, no dangerous gap around the edges**

automatic telescopic doors

doors standard 60 min. fire-resistant

## MINIMUM DISRUPTION

modular system

minimal builders work

installation in a few days

## SCREW WITH LIFTING RING

drive and controller integrated

high stop accuracy

no hydraulics, so no leakage

capacity up to 1000 kg

## A ELEVATOR FOR EVERY EVENTUALITY

standard lift for wheelchairs 1000 x 1500 mm

for mobility scooters 1100 x 1700 mm

stretcher lift 1100 x 2100 mm

for limited space 1100 x 1000 mm

## APPEARANCES DO MATTER

superior cabin design

controls with "blue LED" technology

wide choice in materials and colours

## DURABLE AND ENVIRONMENTAL FRIENDLY

low energy consumption

no hydraulic oil

durable materials

## LOW OVERALL COSTS

attractively priced

low maintenance costs

no expensive elevator inspections





# The cabin, the best in luxury and elegance

## Stylish quality

The WESRS's cabin features a stylish design and a solid construction. The elevator meets the tough standards of the EN-81 Lift Directive. Each cabin has an operating panel that extends from floor to ceiling, featuring attractive stainless-steel buttons with modern blue LED illumination.

Western Elevators Sdn Bhd uses only the finest materials for the manufacture of the cabins. The standard design can be augmented by a wide range of options for fully customising the lift, and one can choose from three standard finishing levels.





	CLASSIC	ELEGANCE
corners	powder coated RAL 9016 (white)	satin stainless steel
profiles	powder coated RAL 9016 (white)	satin stainless steel
ceiling	powder coated RAL 9016 (white)	satin stainless steel
operation panel	powder coated RAL 9016 (white)	satin stainless steel
handrail	stainless steel round, ø 40 mm	stainless steel round, ø 40 mm
push buttons	RVS 40 x 60 mm with blue LED	RVS 40 x 60 mm with blue LED
wall finishing	laminate, wide choice in colours	laminate, wide choice in colours
floor finishing	PVC, non-slip, wide choice in colours	PVC, non-slip, wide choice in colours
lights	LED spotlights	LED spotlights
digital display	optional	standard

#### Panoramic:

All cabins are available with glazed walls.



# Doors

The WESR is supplied with automatic telescopic doors as standard. The final form of the door depends on the elevator dimensions, the available space and the requires finishing. This page shows several examples from the wide range of options in glass or in stainless steel.



Epoxy primer  
one side opening



Satin stainless steel  
one side opening



Glass door in frame  
one side opening



Full glass door  
one side opening





Cabin Elegance with maple.

# Specifications

TYPE DESCRIPTION	
model	electric cabin elevator WESR
European directive	Machinery directive 2006/42/EC

GENERAL SPECIFICATION	
capacity (kg)	400 / 630 / 1000
number of stops	max. 8
travel (m)	max. ca. 15
lifting speed (m/s)	0.15
pit depth (mm)	100 or an entry ramp
shaft top (mm)	2700mm.

CABIN SPECIFICATIONS	
cabin types	Classic / Elegance / Panoramic
control panel	vertical, full cabin height
controls	large 60 x 40 mm push buttons with blue LED
floor indicator	digital display with blue LED
wall finishing	HPL laminate, wide choice in colours
floor finishing	PVC, wide choice in colours
ceiling	steel plate powder coated or stainless steel
lighting	LED spotlights
hand rail	round bended, ø 40 mm, stainless steel
communication	telephone or auto dialler

DRIVE / CONTROL	
drive	screw with lifting ring
motor control	direct start or frequency converter
controller	micro processor
motor power (kW)	2,2 / 3,0 (400 / 630 kg)
voltage (V)	400

LIFT DOORS	
type	telescopic door VVVF
design	2 panels, one side opening
door clear width (mm)	900 (1100 mm wide cabin)
door clear height (mm)	2100
finishing cabin door	satin stainless steel
finishing shaft door	epoxy or satin stainless steel
glass doors	optional

SAFETY FEATURES	
emergency descent (battery powered)	
audible alarm	
emergency lighting	
photo cells / light curtain	
overload detection	
safety nut with electric switch	
telephone or auto dialler	
emergency key	
safety relays	

# Cabin finishing

## Floor



### PVC



Biscuit



Dolphin



Black



Cloud



Tundra



Terracotta

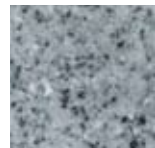
### Granite 90 (Optional)



Bianco Assoluto



Nero Tijuca



Grigio

\*Colours for reference only.



## Walls

### Laminate, UNI colours



114 Yellow



303 Orange



306 Red



311 Maroon



330 Eggplant



506 Dark blue



522 Light blue



527 Royal blue



628 Green



630 Lime green



156 Beige



775 Gray white



961 Graphite black



999 Black

### Laminate, wood



1334 Oak



1555 Wengé



1704 Cherry



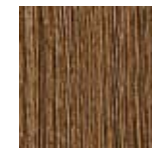
1727 Birch



1887 Maple



1951 Walnut

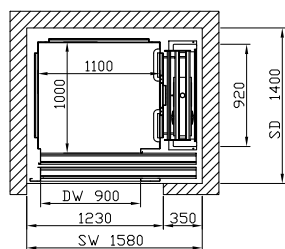


3410 Larch

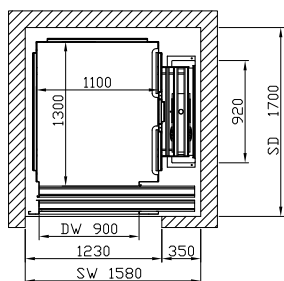
# Dimensions

Single entry, SE

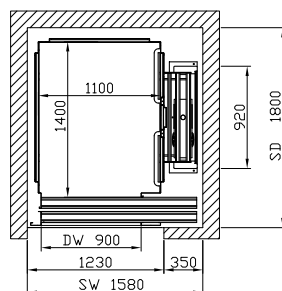
SE1110



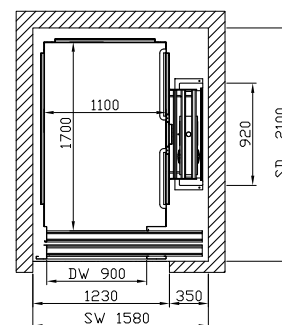
SE1113



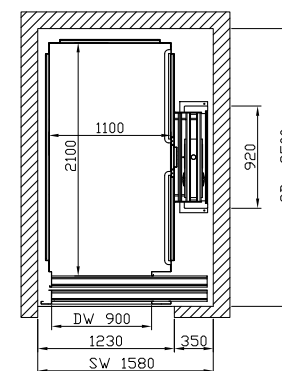
SE1114



SE1117



SE 1121



SE 1110	
CB	1100 mm
CD	1000 mm
SB	1585 mm
SD	1350 mm
DB	900 mm
capacity	400 kg
persons	5

SE1113	
CB	1100 mm
CD	1300 mm
SB	1585 mm
SD	1650 mm
DB	900 mm
capacity	400 kg
persons	7

SE 1114 (wheelchair lift)	
CB	1100 mm
CD	1400 mm
SB	1585 mm
SD	1750 mm
DB	900 mm
capacity	400 / 630 kg
persons	8

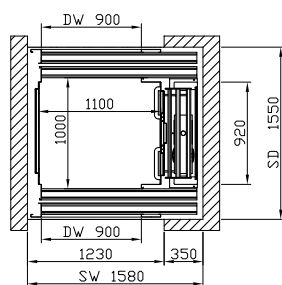
SE 1117 (mobility scooter lift)	
CB	1100 mm
CD	1700 mm
SB	1585 mm
SD	2050 mm
DB	900 mm
capacity	630 kg
persons	8

SE 1121 (stretcher lift)	
CB	1100 mm
CD	2100 mm
SB	1585 mm
SD	2450 mm
DB	900 mm
capacity	630 / 1000 kg
persons	13

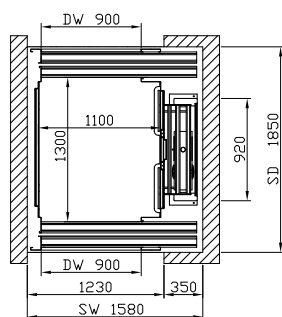
\* Model SE1115 is also available.

Opposite entry, OE

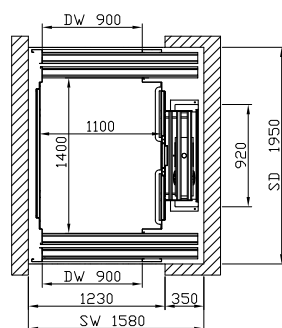
OE1110



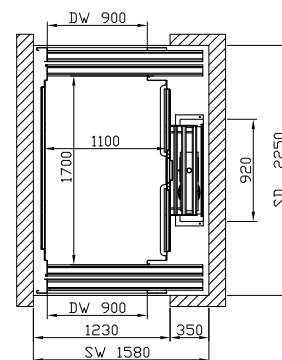
OE1113



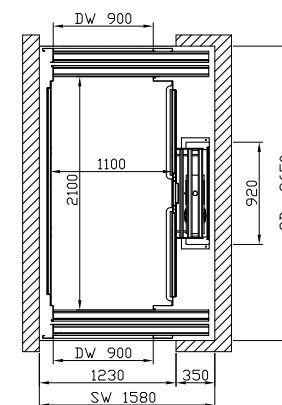
OE1114



OE1117



OE1121



OE1110	
CB	1100 mm
CD	1000 mm
SB	1585 mm
SD	1500 mm
DB	900 mm
capacity	400 kg
persons	5

OE 1113	
CB	1100 mm
CD	1300 mm
SB	1585 mm
SD	1800 mm
DB	900 mm
capacity	400 kg
persons	7

OE1114	
CB	1100 mm
CD	1400 mm
SB	1585 mm
SD	1900 mm
DB	900 mm
capacity	400 / 630 kg
persons	8

OE1117	
CB	1100 mm
CD	1700 mm
SB	1585 mm
SD	2200 mm
DB	900 mm capacity 630 kg
persons	8

OE1121	
CB	1100 mm
CD	2100 mm
SB	1585 mm
SD	2600 mm
DB	900 mm
capacity	630 / 1000 kg
persons	13

\* Model OE1115 is also available.

Optional: intermediate and bigger dimensions (max 1100 x 2100 mm). Dimensions are in mm. Aforesaid dimensions are indications. To this you can derive yourself no rights from.



# Options / accessories

## CABIN OPTIONS

cabin type Elegance with stainless steel accents

digital display with floor indicator  
(standard with cabin Elegance)

glass cabin walls

mirror half / full wall

telephone or auto dialler

fold down seat

outside cabin corners clad with stainless steel

shaft lining with sandwich panels

## DOOR OPTIONS

stainless steel shaft doors with primer coating

glass shaft and cabin doors

other door heights

central opening doors

doors with 3 of 4 panels for limited spaces

## SHAFT OPTIONS

aluminium shaft with (glass) cladding

outside shaft

pit cover plate

ramp for lift without pit

## CONTROL OPTIONS

frequency converter (soft start-stop)

key switch several use

school locking system

fire man switch

code panel on COP or LOP

fire evacuation switch

remote call button (elbow controlled)

external electrical compartment

arrival gong (ding-dong)

## COMMUNICATION

telephone or auto dialler



RAL colours available on request.



**Western Elevators Sdn Bhd (948472-U)**

A member of Western Elevators Group

**(Showroom)** No. 16, Jalan 17/1, 46400 Petaling Jaya,  
Selangor Darul Ehsan, Malaysia

**(Office)** 15.01, 1 First Avenue, 2A, Dataran Bandar Utama,  
Bandar Utama Damansara, 47800 Petaling Jaya,  
Selangor Darul Ehsan, Malaysia

T : +(6) 03 7955 0088, 7651 7896 F : +(6) 03 7957 8088

[www.westernelevators.com.my](http://www.westernelevators.com.my) E : [info@westernelevators.com.my](mailto:info@westernelevators.com.my)